

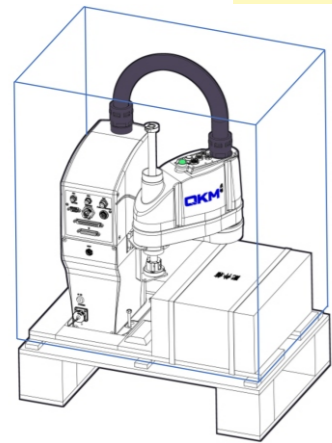
Quick Install Guide

AH3 Robot AH3-0400-0204-1700



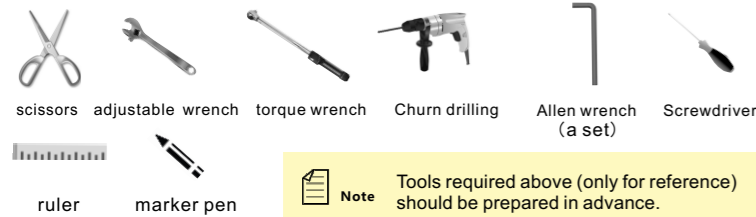
Out of box Audit

Note Applied to each AH3 robot. Basic configuration (package and quantity) - for your reference only, should according to the actual situation.



- Robot body
- Accessory box
- User's manual

Installation Toolkit



Note Tools required above (only for reference) should be prepared in advance.

Resources download

Please access to QKM website to obtain resources related to our product (user's manual, software system and training material, etc.)

Service and technical support

Before you contact our technical representative, please provide follow information:

- Robot model No.
- Robot serial No.
- Any accurate expression of alarm infor. and description of the problem.

QKM Technology(Dongguan)Co.,Ltd

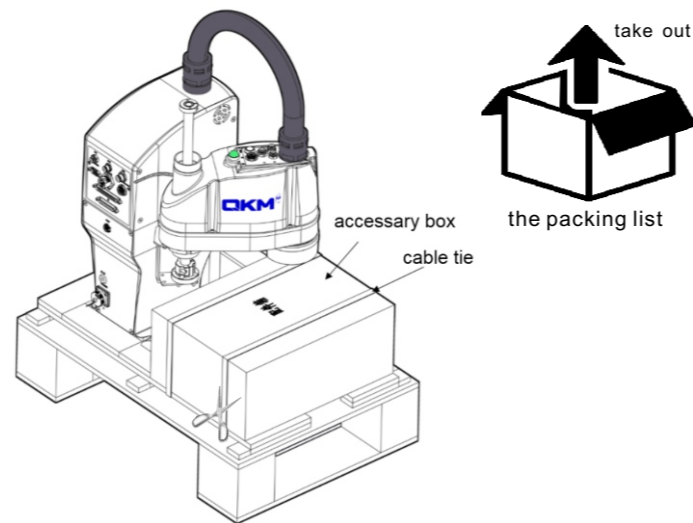
Tower A, Building 17, Headquarters 1, No.4 Xinzhu Road, Songshan Lake High-tech Industrial Development Zone, Dongguan, Guangdong, China

Tel: +86 0769-27231381
 Fax: +86 0769-27231381-8053
 Zip code: 523808
 Email: service@qkmtech.com
 Website: www.qkmtech.com



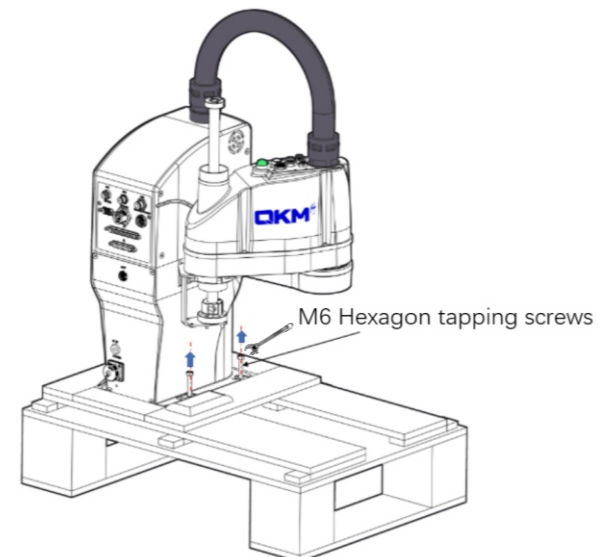
Scan QR code to follow QKM

1 Disassemble accessory box



1. Cut off the cable tie to unload accessory box.
2. Take out the required items from accessory box, confirm the product components and status according to the packing list.

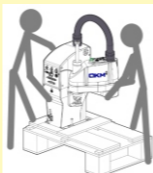
2 Disassemble pedestal



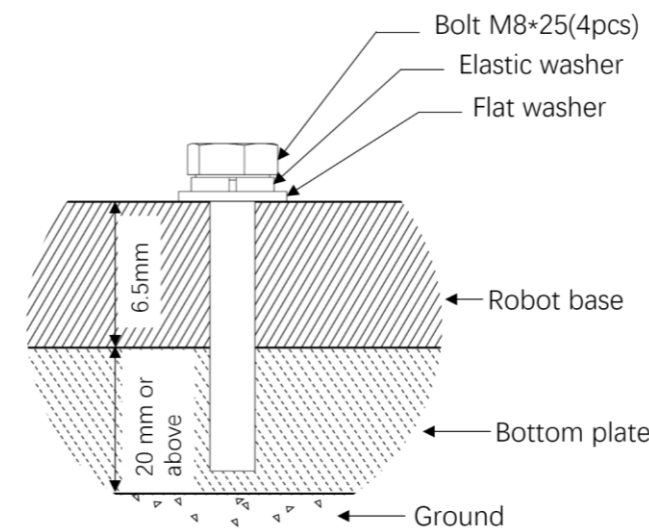
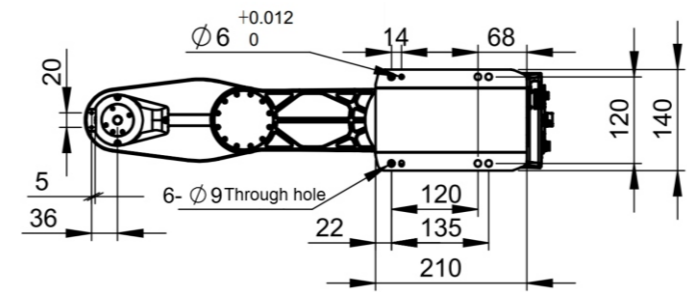
1. Use a adjustable wrench to remove the fixing screw.

NOTICE After the robot base screw is removed, the robot arm needs to be manually supported. Avoid tilting the robot due to its own center of gravity.

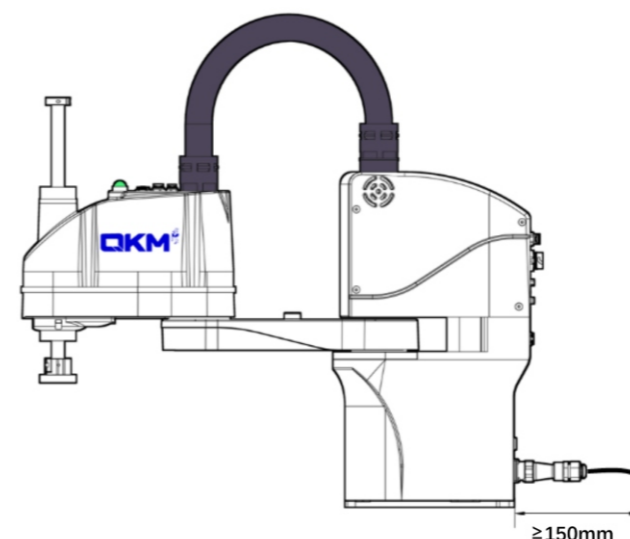
NOTICE When transporting robots, at least 2 people should support them with their hands and work together. Assist in transporting the robot to the installation rack (the entire robot Weight is 17kg).



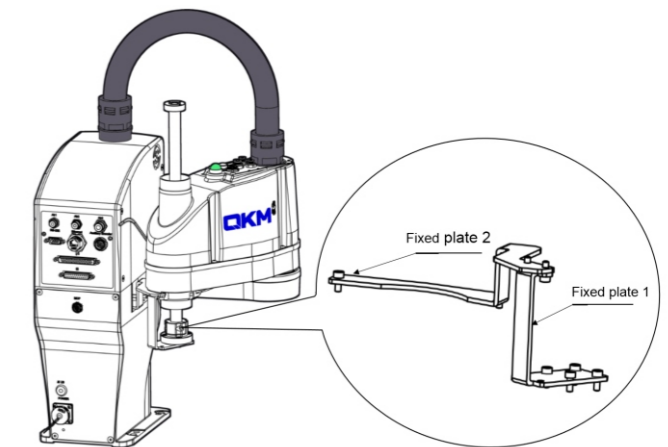
3 Install pedestal



NOTICE The back of the robot base should be reserved for more than 150mm space for cable installation

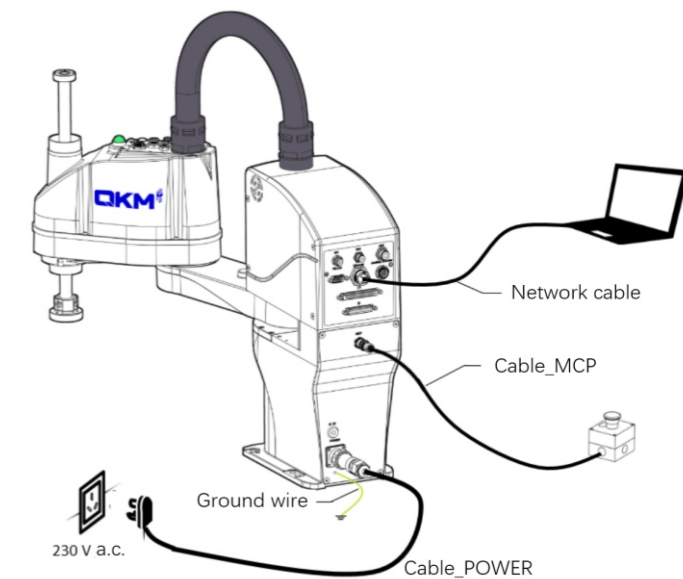


4 Removal of fixed plate



1. Use the hexagon wrench to remove the screws from the fixed plate.
2. Push the first and second robotic arms to separate the external fixed plates and remove the fixed plates for storage.

5 Installation of Wires and Cables



1. Install the network cable, ground wire, cable _MCP and cable _POWER according to the schematic diagram.

NOTICE Pay attention to the safety of electricity, please do not install the cable with power.